

SIUI

SHANTOU INSTITUTE OF ULTRASONIC INSTRUMENTS

CTS-3300

Digital Ultrasound Imaging System

- Digital Imaging Technology
- Broadband Multi-frequency Probe
- Digital Image Storage
- Abundant Application Software
- 10-inch High Resolution Monitor



The CTS-3300 is a B/W digital ultrasound imaging system. It has streamline appearance, good image resolution, stable performance and powerful functions. It is adaptable in various environments, including clinics and hospitals.

Advanced Technology

By following SIUI's traditional precise manufacture process, the CTS-3300 incorporates advanced digital imaging technology and adopts components such as super large-scale ASIC, programmable FPGA and CPLD with large memory. The system is stable in performance and reliable in quality.

High Density, Broadband, Triple-frequency Probes

The system is configured with high density, broadband, multi-frequency probes. Probe frequency can be switched quickly by pressing one console button only, enabling doctors to select the right frequency for specific diagnosis and patients. Image resolution and penetration is significantly optimized.

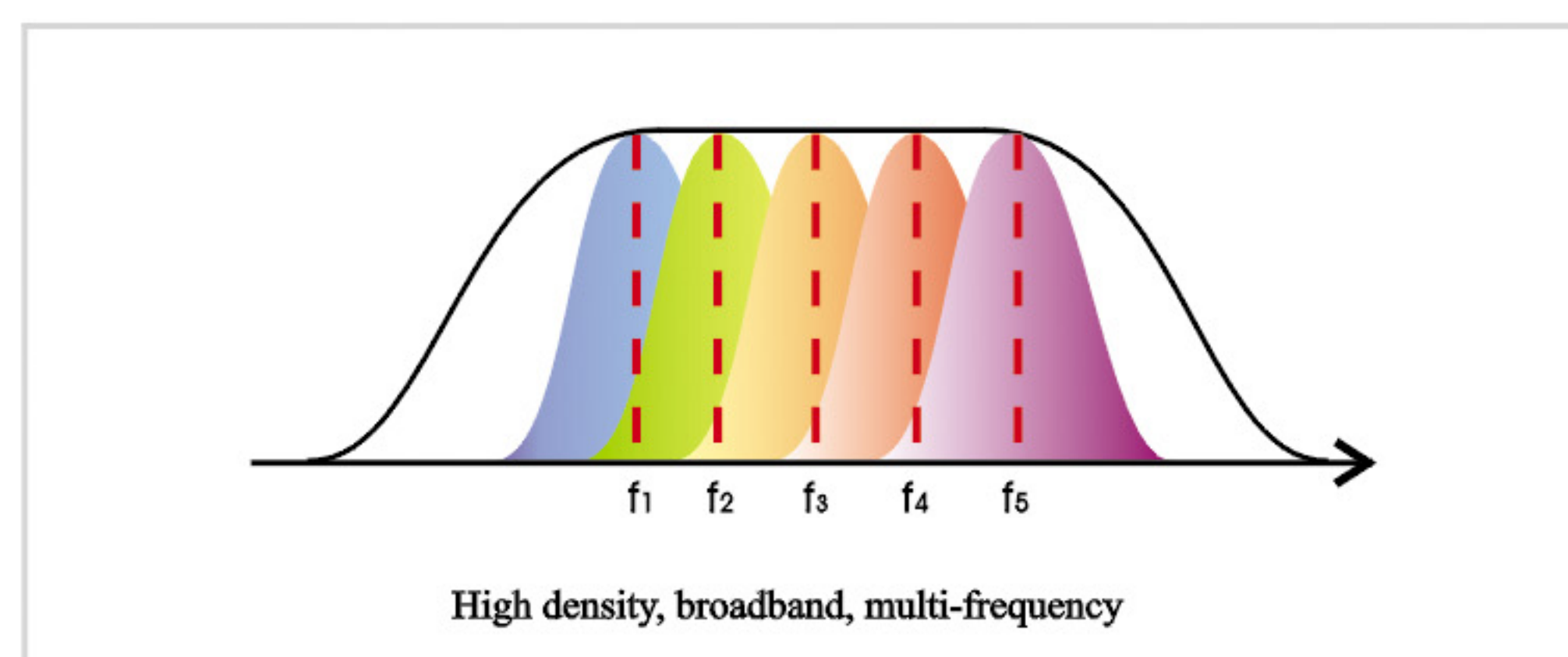
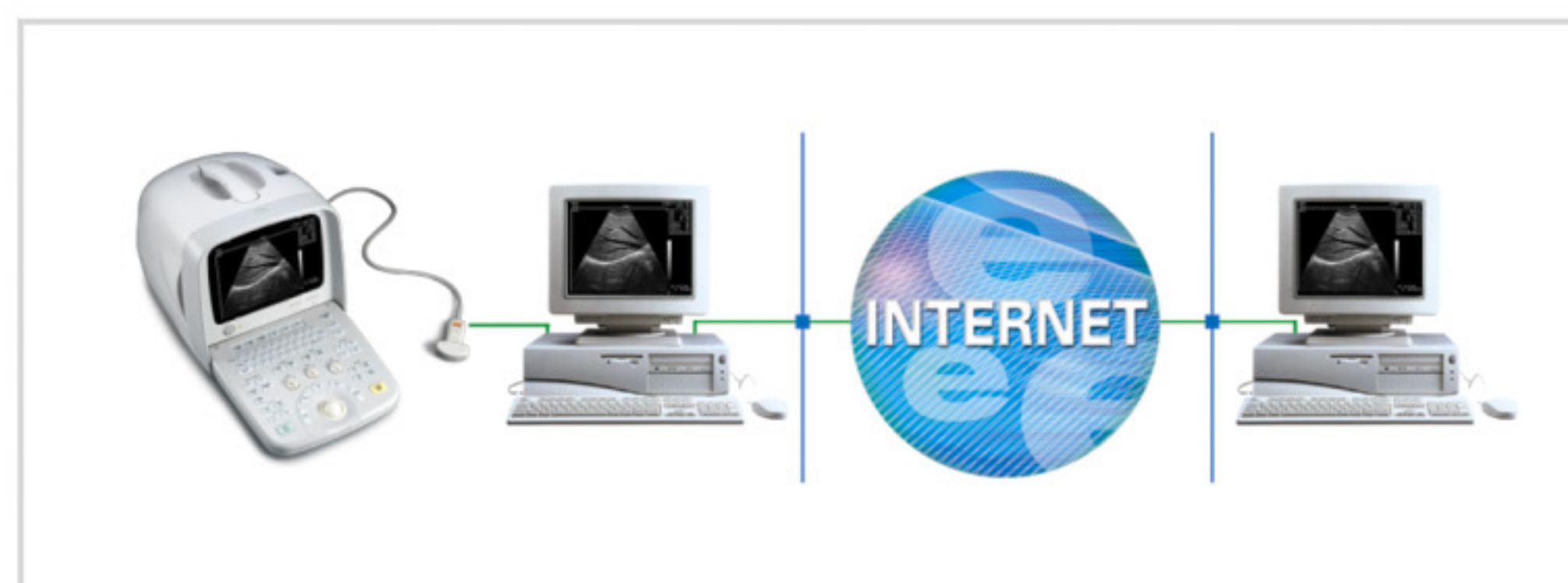


Image Storage and Communication

Images can be stored and directly transmitted to a computer, thus to realize digital image management.



Ergonomic Design

Large cine memory: to capture fast-moving info and enable accurate diagnosis

Backlit keyboard: good for dark room operation

Non-interlaced monitor: flicker free, perceptive to details

Additional trolley: perfect match for the system



Standard Configuration

- * Main unit: 1 Set
- * Convex probe: 1 Pc
- * Accessories: 1 Set

Options

- * Linear, micro-convex, vaginal and rectal probes
- * Video Printer
- * Biopsy guide
- * Foot switch
- * Trolley

Add: #77, Jinsha Road, Shantou 515041, Guangdong, China
 Tel: (86)754-8250150 Fax: (86)754-8251499
 http://www.siui.com E-mail: siui@siui.com

